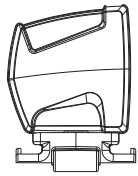
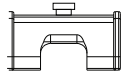


CX-290 BLUETOOTH SPEED SENSOR

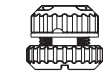
Item Check List



CX-290 Sensor



Rubber



Speed Magnet



O ring Rubber



Nylon ties x2 Pcs

Compatibility



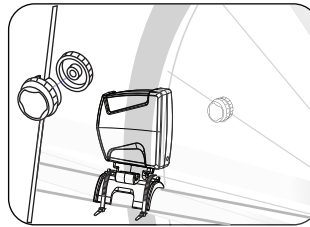
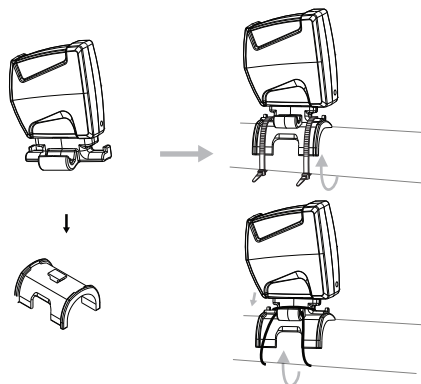
The Speed Sensor enables to track bike speed in real time and sends data to the compatible display devices via Bluetooth Smart (Bluetooth 4.0) wireless technology.

Installation

A. Install the Magnet

Secure the Speed Magnet on the spoke of the rear wheel with screw. Make sure the magnet side faces the speed sensor zone. Once above items are in the right position, the user may go for a ride.

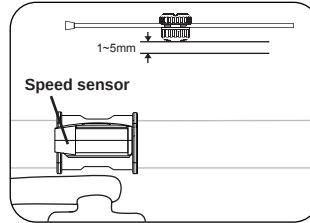
NOTE: Please make sure everything has been setup properly before start using the bicycle.



B. Find out the wheel size

Wheel Circumstance

To get the accurate result, the wheel size should be correct. Mark the symbol on the tire and ride one cycle. Then measure the length between two points to get the circumference by the following equation: Circumference=2x3.14xR (R=Radius in millimeter).



The maximum distance between the speed sensor and the magnet is 5mm.

Maintenance

Speed Sensor

Check the position of sensor and magnet periodically. For current measurement, the sensor, magnet should not get wet/rust, otherwise it may cause function error.

Bracket/Magnet/Sensor band

These items can be rinsed in surface fresh water or washed with a mild soap

BLUETOOTH Speed Sensor

Compatibility

- ios devices: iphone4s and above, ipod touch (5th gen and above),ipad (3rd gen and above),ipad mini, ipod nano (7th gen and above)
- Android devices: all devices with Bluetooth smart ready technology and Android OS version 4.3

Important Health Notice

Keep this device away from children. It contains batteries, which might be swallowed by children.

As with most electronic receiving devices, there can sometimes be interference that causes inaccurate display readouts. Avoid using your sensor near common sources of interference. These include high voltage power lines, air conditioning motor units, fluorescent lights, wristwatches, mobiles and computers.

Limited Warranty

Warranty does not cover the batteries, damages due to misuse ,abuse or accidents, cracked or broken cases, negligence of precautions, improper maintenance or commercial use.

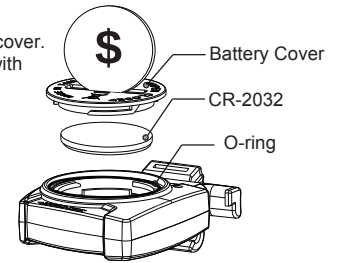
Warranty is void if repairs are done by non authorized service technician. During this warranty period (two year) the product will either be repaired or replaced without charge.

Replace Battery

To replace the battery, unscrew the back cover. Gently remove the battery and replace it with a new battery model CR2032.

The (+) side should be facing up.

*NOTE: Losing O-ring may cause water leakage.



Tire Scale	L(mm)	Tire Scale	L(mm)
14 x 1.50	1020	26 x 2.10	2068
14 x 1.75	1055	26 x 2.125	2070
16 x 1.50	1185	26 x 2.35	2083
16 x 1.75	1195	26 x 3.00	2170
18 x 1.50	1340	27 x 1	2145
18 x 1.75	1350	27 x 1-1/8	2155
20 x 1.75	1515	27 x 1-1/4	2161
20 x 1-3/8	1615	27 x 1-3/8	2169
22 x 1-3/8	1770	650 x 35A	2090
22 x 1-1/2	1785	650 X 38A	2125
24 x 1	1753	650 X 38B	2105
24 x 3/4 Tubular	1785	700 X 18C	2070
24 x 1-1/8	1795	700 X 19C	2080
24 x 1-1/4	1905	700 X 20C	2086
24 x 1.75	1890	700 X 23C	2096
24 x 2.00	1925	700 X 25C	2105
24 x 2.125	1965	700 X 28C	2136
26 x 7/8	1920	700 X 30C	2146
26 x 1(59)	1913	700 X 32C	2155
26 x 1(65)	1952	700C Tubular	2130
26 x 1.25	1953	700 X 35C	2168
26 x 1-1/8	1970	700 X 38C	2180
26 x 1-3/8	2068	700 X 40C	2200
26 x 1-1/2	2100	700 X 42C	2224
26 x 1.40	2005	700 X 44C	2235
26 x 1.50	2010	700 X 45C	2242
26 x 1.75	2023	700 X 47C	2268
26 x 1.95	2050	29 x 2.1	2288
26 x 2.00	2055	29 x 2.3	2326